

CONCEPT

MAKINO URUSHI DESIGN

伝統的な漆塗りの技術を新しい美意識と融合し現代の生活に蘇らせる

Combining traditional lacquering techniques with a new sense of beauty
with an aim to revive "urushi" in contemporary life.

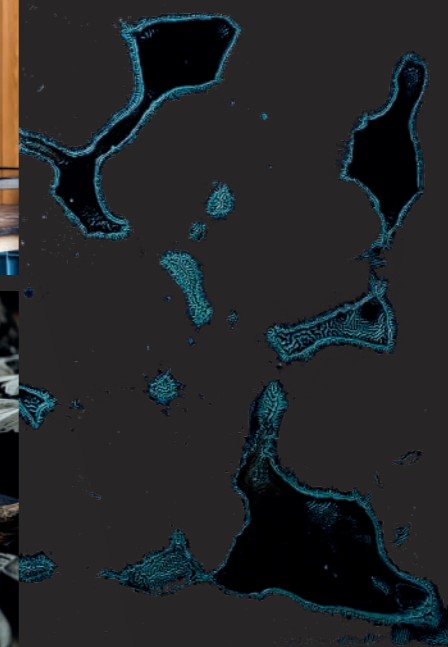
漆は古来より最も優れた天然塗料として、日本人の暮らしの中に取り入れられ、日本の文化の発展とともに、実用品だけでなく、優れた工芸品を生み出してきました。この日本の漆の文化の系譜を引き継ぎ、神社仏閣から現代アートまで、幅広く漆を手がけてきたのが、私たち、オールラウンドの塗師の集団、京都の牧野漆工芸株式会社です。この度、伝統的な漆塗りの技術を新しい美意識と融合し、現代の生活の中に蘇らせるべく、新しいブランド「Makino Urushi Design」を立ち上げ、新しい漆の姿を求めて、異分野の職人やデザイナーとのコラボレーションを行いながら、今までにない画期的な製品を提案していきます。

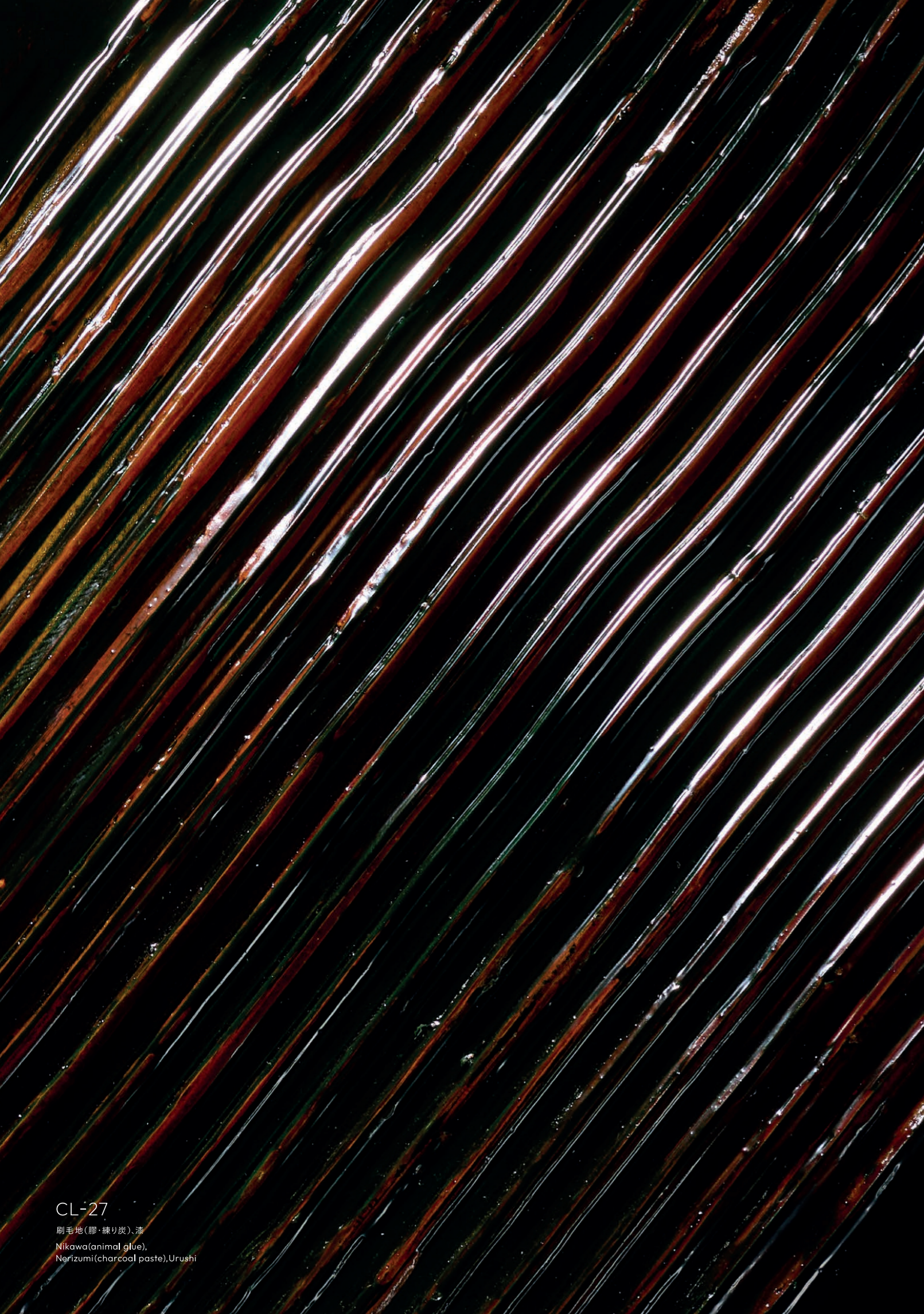
Known as a sought-after painting material since ancient times, "urushi", sap of lacquer tree, has been a part of lifestyles in Japan. Along with the development of Japanese culture, not only practical daily items, but works of art have been produced with urushi. We at Makino Urushi Kogei Co.,Ltd. in Kyoto are a group of experienced lacquer artisans, involved with a wide variety of lacquer work, from temple/shrines to contemporary art. Combining the tradition with a new sense of beauty, we have launched the new brand Makino Urushi Design to revive urushi in contemporary life. Aiming for a new vision for urushi, we carry out collaborations with artisans and designers of different fields in order to produce objects that have never been seen before.

HISTORY

- 1940年頃 初代・牧野新吉が輪島から京都に移り京仏具京仏壇の塗師となる
- 1955年 新吉 1度目の金閣寺修復に携わる
- 1985年 2代目 牧野新一が京都・宇治にて牧野漆工芸創業
- 1986年 新吉・新一 共に2度目の金閣寺修復を手掛ける
- 2001年 工房拡大、全国の寺社仏閣の修復などに携わる
- 2018年 株式会社牧野漆工芸に改組
3代目 牧野俊之が代表に就任
- 2020年 次期4代目 牧野昂太 入門
- 2021年 海外デザイナーと協業し、ハイエンド・インテリア家具やオブジェなどの制作に着手
- 2022年 Makino Urushi Design 設立

- Around 1940 Shinkichi MAKINO moves to Kyoto working as a lacquer artisan for Buddhist altars
- 1955 Shinkichi Makino takes part in the first restoration of Kinkaku-ji temple
- 1985 The 2nd generation Shinichi MAKINO established Makino Urushi Kogei Studio in Uji, Kyoto
- 1986 Both Shinkichi and Shinichi take part in the second restoration of Kinkaku-ji temple
- 2001 Studio expansion. Commissions from temples/shrines all over Japan
- 2018 Re-organization of Makino Urushi Kogei Co., Ltd. Toshiyuki MAKINO succeeds as the third generation head
- 2020 The next 4th generation head Kohta MAKINO begins his training
- 2021 Working with overseas designers, production of high-end interior furniture and object begins
- 2022 Makino Urushi Design is established

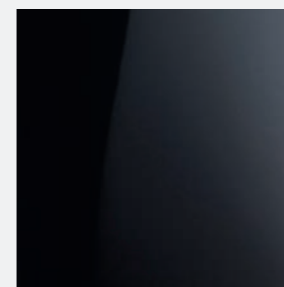




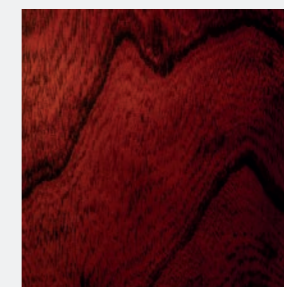
CL-27 wood box

CL-27

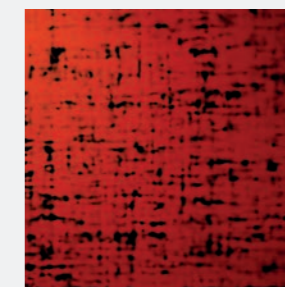
刷毛地(膠・練り炭)、漆
Nikawa(animal glue),
Nerizumi(charcoal paste),Urushi



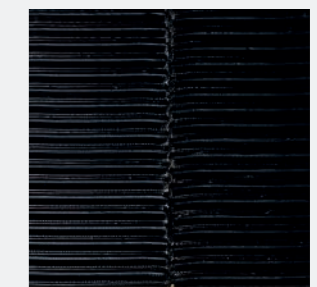
刷毛地(膠・練り炭)、漆 CL-01
Nikawa(animal glue), Nerizumi(charcoal paste),Urushi



生漆 CL-14
Raw urushi



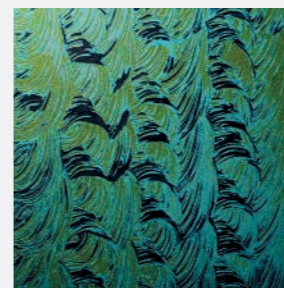
刷毛地(膠・練り炭)、漆 CL-25
Nikawa(animal glue), Nerizumi(charcoal paste),Urushi



刷毛地(膠・練り炭)、漆 CL-28
Nikawa(animal glue), Nerizumi(charcoal paste),Urushi



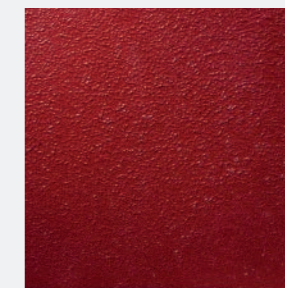
O-5 door



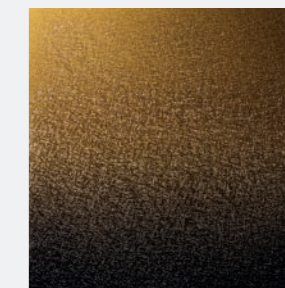
刷毛地(膠・練り炭)、漆 O-03
Nikawa(animal glue), Nerizumi(charcoal paste), Urushi



刷毛地(膠・練り炭)、漆 O-05
Nikawa(animal glue), Nerizumi(charcoal paste), Urushi



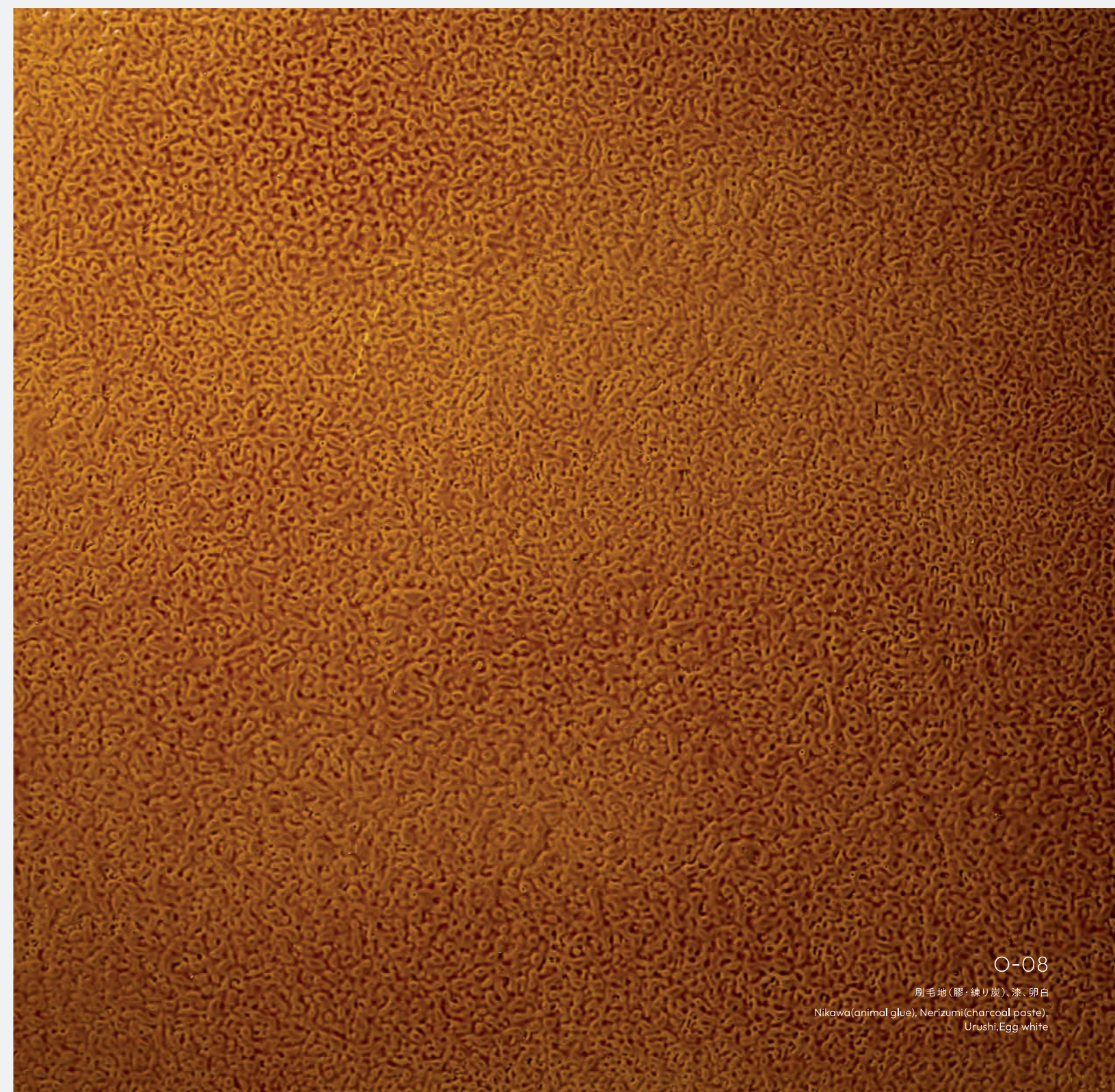
刷毛地(膠・練り炭)、漆、卵白 O-06
Nikawa(animal glue), Nerizumi(charcoal paste), Urushi, Egg white



刷毛地(膠・練り炭)、漆 O-14
Nikawa(animal glue), Nerizumi(charcoal paste), Urushi



O-8 screen



O-08
刷毛地(膠・練り炭)、漆、卵白
Nikawa(animal glue), Nerizumi(charcoal paste),
Urushi, Egg white



E-07

漆、卵白
Urushi, Egg white



E-3 coffee table

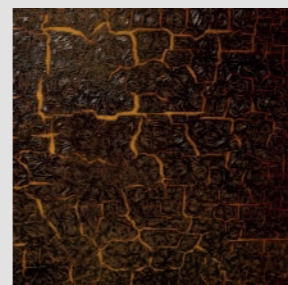


E-7 buffet



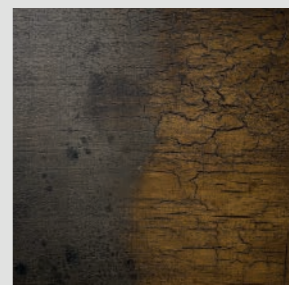
乾漆粉、漆
Dried urushi powder, Urushi

E-03



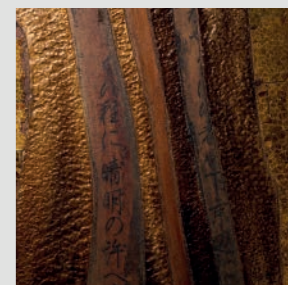
漆、卵白
Urushi, Egg white

E-13



漆、卵白
Urushi, Egg white

E-14

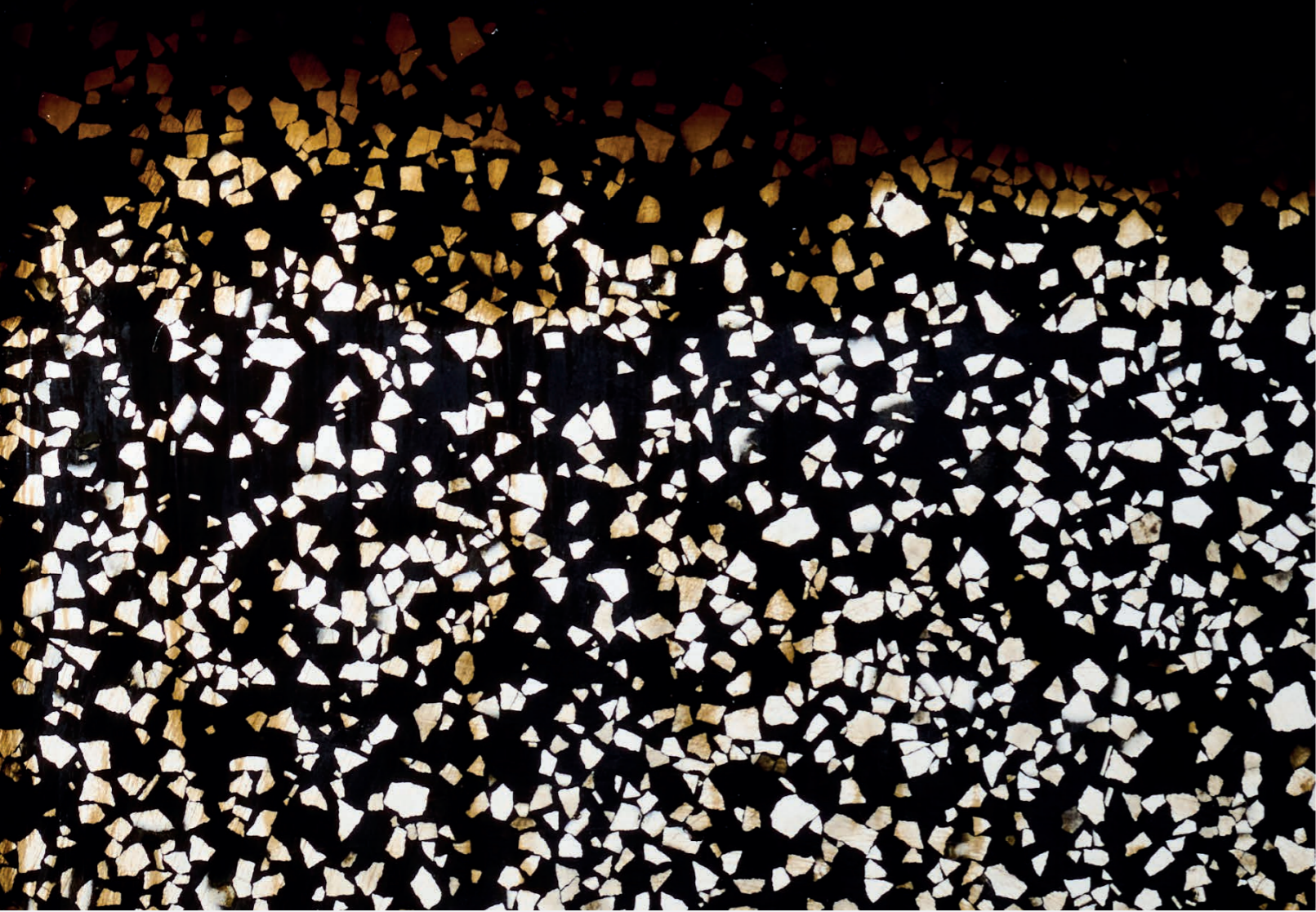


砥粉、卵殼、和紙、漆
Abrasive Powder, Eggshell, Washi Paper, Urushi

E-21

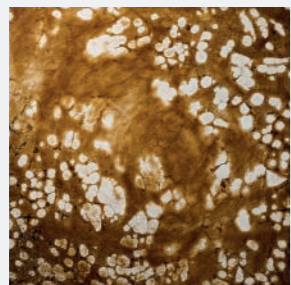
I-02

刷毛地(膠・練り炭)、卵殻、漆
Nikawa (animal glue), Nerizumi (charcoal paste),
Eggshell, Urushi



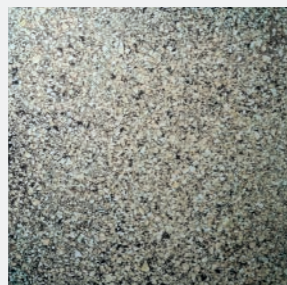
I-18 tray

I-02 I-12 table lamp



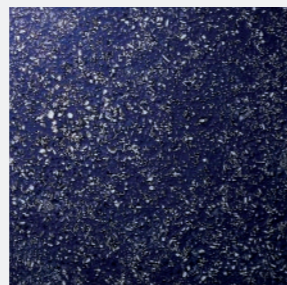
刷毛地(膠・練り炭)、卵殻、漆
Nikawa (animal glue), Nerizumi (charcoal paste), Eggshell, Urushi

I-06



刷毛地(膠・練り炭)、卵殻、漆
Nikawa (animal glue), Nerizumi (charcoal paste), Eggshell, Urushi

I-12



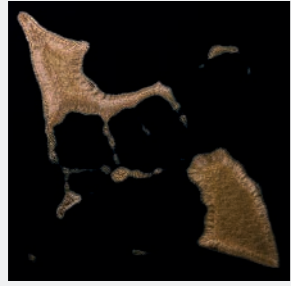
卵殻、漆
Eggshell, Urushi

I-14

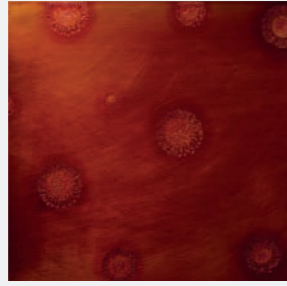


刷毛地(膠・練り炭)、漆、卵白
Nikawa (animal glue), Nerizumi (charcoal paste), Urushi, Egg white

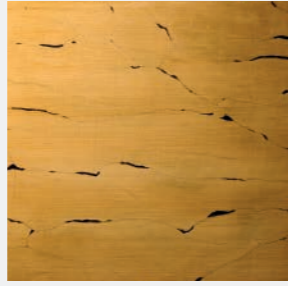
I-18



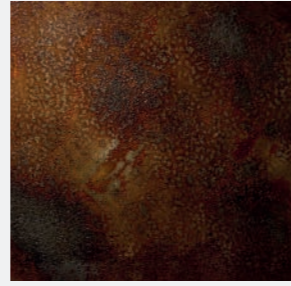
刷毛地(膠・練り炭)、漆、パール粉 CO-01
Nikawa (animal glue), Nerizumi (charcoal paste), Urushi, Pearl powder



漆 CO-06
Urushi



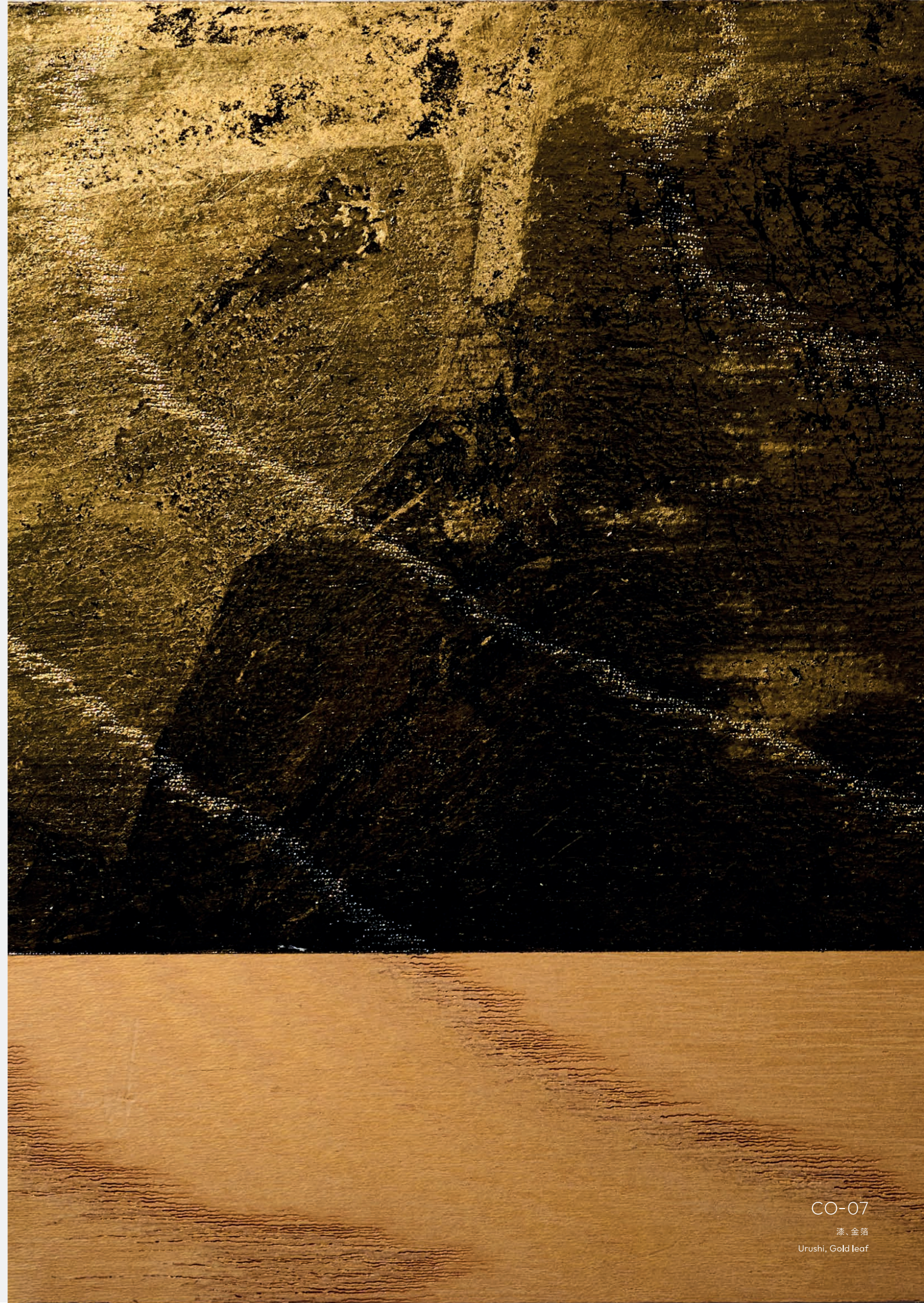
漆、卵白 CO-08
Urushi, Egg white



漆、真鍮、炭粉 CO-09
Urushi, Brass, Charcoal powder



CO-7 wall panels



CO-07

漆、金箔
Urushi, Gold leaf

